



Purchase 3 or more eligible GE Profile™ or select GE appliances from July 20, 2016 to December 31, 2016, at a participating authorized GE Appliances retail dealer. Depending on the number of appliances purchased, receive a GE Appliances (GEA) Visa® prepaid card valued up to \$2,000\*—via online or mail-in rebate. No more than two appliances of the same type will be eligible for rebate. For example, if you purchase three eligible microwaves, only two will be considered for rebate. See details and the list of eligible models below and on reverse side.\*\* This rebate cannot be combined with any other GE package rebate.

Submit your claim online at  
**GEAPPLIANCEPROMOTIONS.COM**

ONLINE SUBMISSIONS ARE EASY  
AND **PROCESSED FASTER!**



You can also choose  
to enter your claim  
on your mobile device.

#### HOW TO RECEIVE YOUR VISA PREPAID CARD REBATE

- To submit online, please visit [www.geappliancepromotions.com](http://www.geappliancepromotions.com).
- If you choose to mail in your rebate request:
  - Complete ALL information on the rebate form—including model number and serial number for each product. Incomplete forms will not be processed. Mark the models purchased on this form.
  - Include the retail invoice or sales slip (photocopy acceptable) which shows the model number, name of store where the appliances were purchased, date of purchase and purchase price.
- Rebate submission must be submitted online or postmarked no later than January 29, 2017. Late submissions will not be accepted.

- Mail no later than January 29, 2017 to:

GEA Claims  
GEA \$2,000\* Profile Sales Event Rebate #37042  
P.O. Box 2100  
Wayne, NJ 07474-2100

For mail submission, allow 8 to 10 weeks for delivery of rebate card. If not received after ten weeks, check online at [geappliancepromotions.com](http://geappliancepromotions.com) or call 1-866-319-9259.

- Retain a copy of submitted materials for your records.

\*Via online or mail-in rebate

ONLY COMPLETE THE MAIL-IN FORM BELOW IF YOU'RE UNABLE TO SUBMIT ONLINE. SUBMIT ONLINE AT GEAPPLIANCEPROMOTIONS.COM

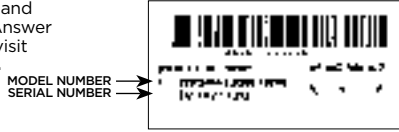
You are required to check an eligible model number and enter a serial number below and indicate model numbers of eligible models listed on this form. **\*\* If you have not taken delivery of your appliances and do not expect to receive prior to January 29, 2017, please forward your claim now without serial numbers. You will be notified via email once we process your claim that we need your serial numbers.** When you have your serial numbers, call 1-866-319-9259 for the claim to be processed. All serial numbers must be submitted by March 25, 2017, for rebate to be valid.

**\*REBATES—MAXIMUM \$2,000 REBATE**

- \$300—Purchased 3 eligible appliances      \$850—Purchased 6 eligible appliances
- \$400—Purchased 4 eligible appliances      \$1,000—Purchased 7 eligible appliances
- \$600—Purchased 5 eligible appliances      \$2,000—Purchased 8 eligible appliances

1	MODEL NUMBER	SERIAL NUMBER
2	MODEL NUMBER	SERIAL NUMBER
3	MODEL NUMBER	SERIAL NUMBER
4	MODEL NUMBER	SERIAL NUMBER
5	MODEL NUMBER	SERIAL NUMBER
6	MODEL NUMBER	SERIAL NUMBER
7	MODEL NUMBER	SERIAL NUMBER
8	MODEL NUMBER	SERIAL NUMBER

For help locating your model and serial numbers call the GE Answer Center® at 800.626.2000 or visit [geappliancepromotions.com](http://geappliancepromotions.com).



YOUR NAME \_\_\_\_\_

ADDRESS \_\_\_\_\_

CITY \_\_\_\_\_ STATE \_\_\_\_\_ ZIP \_\_\_\_\_

10-DIGIT PHONE \_\_\_\_\_

EMAIL ADDRESS \_\_\_\_\_

**PLEASE BE ADVISED THAT AN EMAIL ADDRESS IS REQUIRED FOR CHECKING YOUR CLAIM STATUS ONLINE AND RECEIVING CLAIM STATUS NOTIFICATIONS.**

**\*\*ELIGIBLE MODELS. PLEASE MARK ELIGIBLE APPLIANCES PURCHASED**

- |  |   |  |  |   |
|--|---|--|--|---|
| <p><b>FRENCH-DOOR REFRIGERATORS</b></p> <ul style="list-style-type: none"> <li>○ PFE28KMKES</li> <li>○ PFE28KSKSS</li> <li>○ PFE28PMKES</li> <li>○ PFE28PSKSS</li> <li>○ PFE28RSHSS</li> <li>○ PFH28PSHSS</li> <li>○ PFS23KSHSS</li> <li>○ PMS20KSHSS</li> <li>○ PWE23KMDIES</li> <li>○ PWE23KMKES</li> <li>○ PWE23KSDSS</li> <li>○ PWE23KSKSS</li> <li>○ PYE22KMKES</li> <li>○ PYE22KSKSS</li> <li>○ PYE22PMKES</li> <li>○ PYE22PSHSS</li> <li>○ GYE22HMKES</li> <li>○ GYE22HSKSS</li> </ul> <p><b>SIDE-BY-SIDE REFRIGERATORS</b></p> <ul style="list-style-type: none"> <li>○ PSB42YSHSS</li> <li>○ PSB42YSKSS</li> <li>○ PSB42YPHSS</li> <li>○ PSB42YHSV</li> <li>○ PSB48YSKSS</li> <li>○ PSB48YPSV</li> <li>○ PSE25KGHBB</li> <li>○ PSE25KSHSS</li> <li>○ PSS28KSHSS</li> <li>○ PZS22MMKES</li> <li>○ PZS22MSKSS</li> <li>○ PZS23KSESS</li> <li>○ PZS23KGEVB</li> <li>○ PZS23KGEVW</li> <li>○ PZS23KPEBV</li> <li>○ PZS23KPEVW</li> <li>○ PZS25KSESS</li> <li>○ GZS22DSJSS</li> <li>○ GZS22DMJES</li> </ul> <p><b>WINE &amp; BEVERAGE CENTERS</b></p> <ul style="list-style-type: none"> <li>○ PCRO6WATSS</li> <li>○ PCRO6BATSS</li> </ul> <p><b>ICE MAKERS</b></p> <ul style="list-style-type: none"> <li>○ UNCI5NJII</li> <li>○ UCCI5NJII</li> </ul> <p><b>DUAL-FUEL SLIDE-IN RANGE</b></p> <ul style="list-style-type: none"> <li>○ P2S920SEFSS</li> </ul> <p><b>SLIDE-IN GAS RANGES</b></p> <ul style="list-style-type: none"> <li>○ PGS920SEFSS</li> <li>○ PGS950EEFES</li> <li>○ PGS950SEFSS</li> <li>○ JGS750EEFES</li> <li>○ JGS750SEFSS</li> </ul> <p><b>SLIDE-IN ELECTRIC RANGES</b></p> <ul style="list-style-type: none"> <li>○ PHS920SFSS</li> <li>○ PS920SFSS</li> <li>○ PS950EFES</li> <li>○ PS950SFSS</li> <li>○ JS750EFES</li> <li>○ JS750SFSS</li> </ul> | <p><b>FREE-STANDING DUAL-FUEL RANGE</b></p> <ul style="list-style-type: none"> <li>○ P2B940SEJSS</li> </ul> <p><b>FREE-STANDING GAS RANGES</b></p> <ul style="list-style-type: none"> <li>○ PGB911DEJBB</li> <li>○ PGB911DEJWW</li> <li>○ PGB911EEJES</li> <li>○ PGB911EJSS</li> <li>○ PGB911EJSS</li> <li>○ PGB912EJSS</li> <li>○ PGB930SEJSS</li> <li>○ PGB940SEJSS</li> <li>○ PGB940ZEJSS</li> <li>○ PGB960EEJES</li> <li>○ PGB960SEJSS</li> <li>○ PGB980ZEJSS</li> </ul> <p><b>FREE-STANDING ELECTRIC RANGES</b></p> <ul style="list-style-type: none"> <li>○ P8911JWW</li> <li>○ P8911DJBB</li> <li>○ P8911EJES</li> <li>○ P8911EJSS</li> <li>○ P8930SJSS</li> <li>○ P8960DJBB</li> <li>○ P8960TJWW</li> <li>○ P8960SJSS</li> <li>○ P8960EJES</li> <li>○ P8980SJSS</li> <li>○ P8980ZEJSS</li> </ul> <p><b>SINGLE ELECTRIC WALL OVENS</b></p> <ul style="list-style-type: none"> <li>○ PK7000DFBB</li> <li>○ PK7000DFWW</li> <li>○ PK7000SFSS</li> <li>○ PK7000EJES</li> <li>○ P7050DFBB</li> <li>○ P7050DFWW</li> <li>○ P7050EHES</li> <li>○ P7050SFSS</li> <li>○ P7050DFBB</li> <li>○ P7050DNBB</li> <li>○ P7925SNSS</li> <li>○ JK5000SFSS</li> <li>○ JT5000EJES</li> <li>○ JT5000SFSS</li> </ul> <p><b>DOUBLE ELECTRIC WALL OVENS</b></p> <ul style="list-style-type: none"> <li>○ PK7500DFBB</li> <li>○ PK7500DFWW</li> <li>○ PK7500EJES</li> <li>○ PK7500SFSS</li> <li>○ PT7550DFBB</li> <li>○ PT7550DFWW</li> <li>○ PT7550EHES</li> <li>○ PT7550SFSS</li> <li>○ PT9550DFBB</li> <li>○ PT9550SFSS</li> <li>○ JK5500SFSS</li> <li>○ JT5500SFSS</li> <li>○ JT5500EJES</li> <li>○ JK3800SHSS</li> <li>○ JT3800SHSS</li> </ul> | <p><b>MICRO/OVEN DOUBLE COMBINATIONS</b></p> <ul style="list-style-type: none"> <li>○ PK7800EKES</li> <li>○ PK7800SKSS</li> <li>○ PT7800HBB</li> <li>○ PT7800HWW</li> <li>○ PT7800EKES</li> <li>○ PT7800SHSS</li> <li>○ PT9800SHSS</li> </ul> <p><b>GAS RANGETOP OVENS</b></p> <ul style="list-style-type: none"> <li>○ CGU366SEHSS</li> </ul> <p><b>GAS COOKTOPS</b></p> <ul style="list-style-type: none"> <li>○ JGP940BEKBB</li> <li>○ JGP940SEKSS</li> <li>○ JGP940TEKWW</li> <li>○ JGP970BEKBB</li> <li>○ JGP970SEKSS</li> <li>○ JGP970TEKWW</li> <li>○ PGP943DETB</li> <li>○ PGP943SETSS</li> <li>○ PGP953DETB</li> <li>○ PGP953SETSS</li> <li>○ PGP959SETSS</li> <li>○ PGP966DETB</li> <li>○ PGP976DETB</li> <li>○ PGP976DETW</li> <li>○ PGP986SETSS</li> <li>○ PGP9830DJBB</li> <li>○ PGP9830TJWW</li> <li>○ PGP9830SJSS</li> </ul> <p><b>ELECTRIC COOKTOPS</b></p> <ul style="list-style-type: none"> <li>○ PPH9030DJBB</li> <li>○ PPH9030SJSS</li> <li>○ PPH9036DJBB</li> <li>○ PPH9036SJSS</li> <li>○ PP7030DJBB</li> <li>○ PP7030SJSS</li> <li>○ PP7036DJBB</li> <li>○ PP7036SJSS</li> <li>○ PP9030DJBB</li> <li>○ PP9030SJSS</li> <li>○ PP9036DJBB</li> <li>○ PP9036SJSS</li> <li>○ PP9830DJBB</li> <li>○ PP9830TJWW</li> <li>○ PP9830SJSS</li> <li>○ JP5030DJBB</li> <li>○ JP5030SJSS</li> <li>○ JP5036DJBB</li> <li>○ JP5036SJSS</li> </ul> <p><b>WARMING DRAWERS</b></p> <ul style="list-style-type: none"> <li>○ PJ7000SFSS</li> <li>○ PW9000SFSS</li> </ul> <p><b>VENTILATION</b></p> <ul style="list-style-type: none"> <li>○ JV936DSS</li> <li>○ JV966DSS</li> <li>○ PV970NSS</li> <li>○ PV976NSS</li> <li>○ PV977NSS</li> <li>○ PVX7300SJSS</li> <li>○ PVX7300EJES</li> <li>○ PVX7360SJSS</li> <li>○ PVW7361SJSS</li> </ul> | <p><b>DISHWASHERS</b></p> <ul style="list-style-type: none"> <li>○ PDF820SGJBB</li> <li>○ PDF820SGJWW</li> <li>○ PDF820SSJSS</li> <li>○ PDT720SSHSS</li> <li>○ PDT720SGHBB</li> <li>○ PDT720SGHWW</li> <li>○ PDT7505MFES</li> <li>○ PDT7605SFSS</li> <li>○ PDT7605SSJSS</li> <li>○ PDT760SJII</li> <li>○ PDT825SGJBB</li> <li>○ PDT825SGJWW</li> <li>○ PDT825SSJSS</li> <li>○ PDT845SMJES</li> <li>○ PDT845SSJSS</li> <li>○ PSD9100DFWW</li> <li>○ PSD9100EFES</li> <li>○ PSD9100SFSS</li> <li>○ PSD9120DFBB</li> <li>○ PSD9120DFWW</li> <li>○ PSD9120EFES</li> <li>○ PSD9120SFSS</li> <li>○ PSD9240EFES</li> <li>○ PSD9240SFSS</li> </ul> <p><b>ADVANTUM® OVENS</b></p> <ul style="list-style-type: none"> <li>○ PSA9120SFSS</li> <li>○ PSA9240SFSS</li> <li>○ PSB9100DFBB</li> <li>○ PSB9100DFWW</li> <li>○ PSB9100EFES</li> <li>○ PSB9100SFSS</li> <li>○ PSB9120DFBB</li> <li>○ PSB9120DFWW</li> <li>○ PSB9120EFES</li> <li>○ PSB9120SFSS</li> <li>○ PSB9240EFES</li> <li>○ PSB9240SFSS</li> </ul> <p><b>OVER-THE-RANGE MICROWAVES</b></p> <ul style="list-style-type: none"> <li>○ PNM9196SFSS</li> <li>○ PNM9216SKSS</li> <li>○ PVM9005DJBB</li> <li>○ PVM9005DJWW</li> <li>○ PVM9005SJSS</li> <li>○ PVM9005EJES</li> <li>○ PVM9179DFBB</li> <li>○ PVM9179DFWW</li> <li>○ PVM9179DKBB</li> <li>○ PVM9179DKWW</li> <li>○ PVM9179EFES</li> <li>○ PVM9179EKES</li> <li>○ PVM9179SFSS</li> <li>○ PVM9179SKSS</li> <li>○ PVM9195DFBB</li> <li>○ PVM9195DFWW</li> <li>○ PVM9195SFSS</li> <li>○ PVM9215DKBB</li> <li>○ PVM9215DKWW</li> <li>○ PVM9215SKSS</li> <li>○ PVM9215SFSS</li> </ul> <p><b>COUNTERTOP MICROWAVES</b></p> <ul style="list-style-type: none"> <li>○ PEB1590DMBB</li> <li>○ PEB1590MWW</li> <li>○ PEB9159DJBB</li> <li>○ PEB9159DJWW</li> <li>○ PEB9159EJES</li> <li>○ PEB9159SFSS</li> <li>○ PEB9159SJSS</li> <li>○ PEB7226DFBB</li> <li>○ PEB7226DFWW</li> <li>○ PEB7226EHES</li> <li>○ PEB7226SFSS</li> </ul> <p><b>COMPACTORS</b></p> <ul style="list-style-type: none"> <li>○ GCG1500RBB</li> <li>○ GCG1500RWW</li> <li>○ GCG1580RSS</li> </ul> | <p><b>FRONT LOAD WASHERS</b></p> <ul style="list-style-type: none"> <li>○ GFV6000FWWW</li> <li>○ GFWR2700HWW</li> <li>○ GFWR2705HMC</li> <li>○ GFWR4800FWM</li> <li>○ GFWR4805FMC</li> <li>○ GFWR4805FRR</li> </ul> <p><b>FRONT LOAD DRYERS</b></p> <ul style="list-style-type: none"> <li>○ GFD5260EFWW</li> <li>○ GFD5260GFWW</li> <li>○ GFD270EHWW</li> <li>○ GFD270GHWW</li> <li>○ GFD275EHMC</li> <li>○ GFD275GHMC</li> <li>○ GFD480EFWW</li> <li>○ GFD480GFWW</li> <li>○ GFD485EFMC</li> <li>○ GFD485EFRR</li> <li>○ GFD485GFMC</li> <li>○ GFD485GFRR</li> </ul> <p><b>TOP LOAD WASHERS</b></p> <ul style="list-style-type: none"> <li>○ GTW860SRJMC</li> <li>○ GTW860SSJWS</li> </ul> <p><b>TOP LOAD DRYERS</b></p> <ul style="list-style-type: none"> <li>○ GTD86EPRJMC</li> <li>○ GTD86ESSJWS</li> <li>○ GTD86GSRJMC</li> <li>○ GTD86GSSJWS</li> </ul> <p><b>WATER HEATERS</b></p> <ul style="list-style-type: none"> <li>○ GEH50DFEJSR</li> <li>○ GEH80DFEJSR</li> </ul> <p><b>WATER SOFTENER</b></p> <ul style="list-style-type: none"> <li>○ GXMH31H</li> </ul> |
|--|---|--|--|---|

If you provide your email address, we will notify you via email when your rebate claim has been received.

Did this rebate influence your purchase decision? Please check one: (optional)  Yes  No

Where did you hear about this promotion? Please check one: (optional)  TV  Online  Newspaper  In Store  Retailer Advertisement  Friend or Family  Email  Social Media

By submitting this rebate form, you are also registering your appliances with GE.A.

GEA takes your privacy seriously. All information you provide shall be held in strict accordance with GE Appliances' Privacy Policy ([www.geappliances.com/privacy/privacy\\_policy.htm](http://www.geappliances.com/privacy/privacy_policy.htm)).

I represent that on      MONTH      DAY      YEAR  
3 or more qualifying GE Profile™ or select GE appliances (see eligible models on this form) were purchased new for personal use, and not for resale.

Rebate must be redeemed on appliances purchased only for personal use. Multiple sales to apartments, builders, condominiums, subdivisions and wholesalers do not qualify. Purchases from Lowe's are not eligible for this rebate promotion. Offer excludes "as-is" retailers. One GEA rebate per household.

Offer void where prohibited, taxed, or restricted by law. Not transferable or redeemable for cash. Fraudulent

submission of form could result in federal prosecution for mail fraud under the U.S. Mail Fraud Statutes (18 USC Section 1341 and 1342). This form must be included with your request. Omission of sales receipt or any other required information will delay processing. For online submissions, expect 6 to 8 weeks for delivery of rebate card. For mail submission, expect 8 to 10 weeks. If not received after ten weeks, check online at [geappliancepromotions.com](http://geappliancepromotions.com) or call 1-866-319-9259, Monday-Friday: 9 AM-9 PM EST; Saturday-Sunday: 9 AM-5 PM EST.

Cards are issued by Citibank, N.A. pursuant to a license from Visa U.S.A. Inc. and managed by Citi Prepaid Services. Cards will not have cash access and can be used

everywhere Visa® debit cards are accepted. This card is a Visa prepaid card. Each time you use the card the amount of the transaction will be deducted from the amount of your available balance. Terms and Conditions apply to the card. Subject to applicable law, a monthly maintenance fee of \$3 (USD) applies, but is waived for the first six months after the card is issued. No additional fees will be assessed once the card balance reaches zero. Cards can be used at merchants that accept Visa debit cards.

I/we hereby understand and accept the above requirements for receipt of the Visa prepaid card rebate and I/we represent that all information provided on this document is accurate and not falsified.

Your Signature \_\_\_\_\_ Date \_\_\_\_\_



GE is a trademark of the General Electric Company. Manufactured under trademark license.